



Bluff Pointe

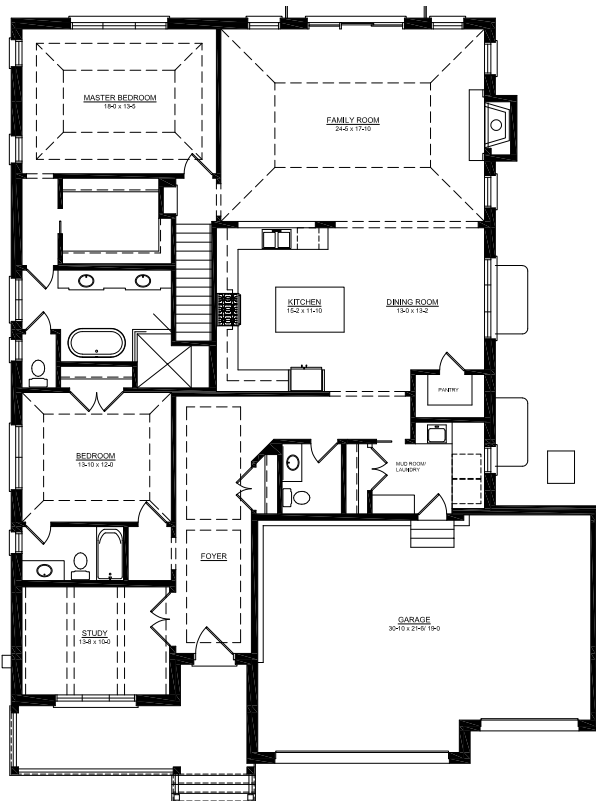


ELEVATION A ↑



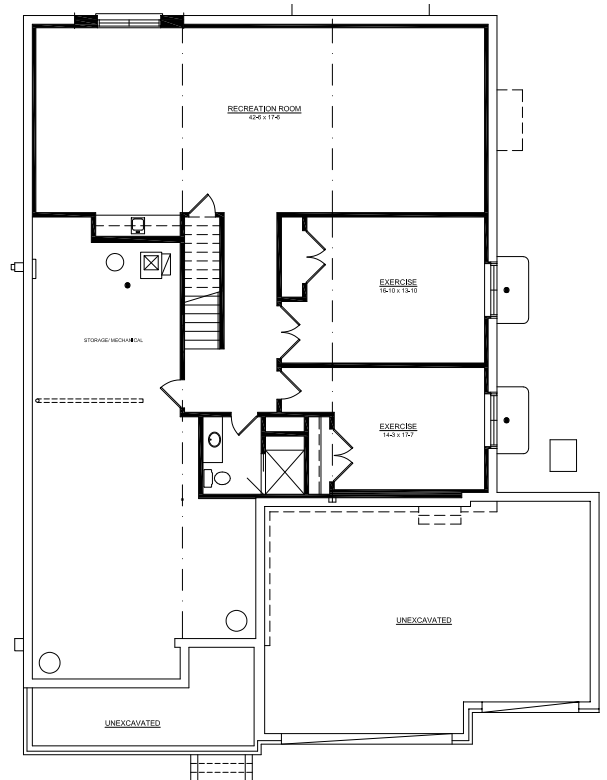
ELEVATION B ↑

The Ashford
2 Bedrooms & 2-1/2 Bathrooms: 2,450 sq. ft.



2,450 sq. ft.

FIRST FLOOR PLAN



1,600 sq. ft.

OPTION LOWER LEVEL FLOOR PLAN



Bluff Pointe

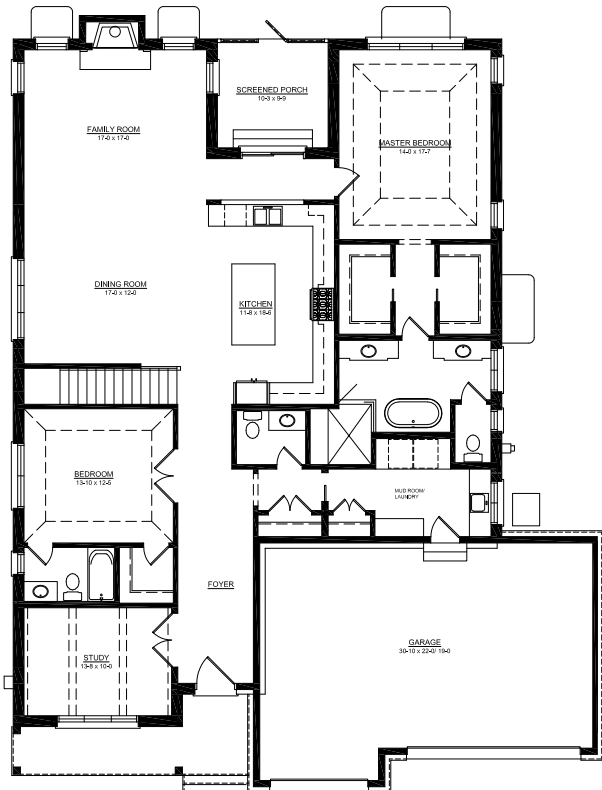


ELEVATION A ↑



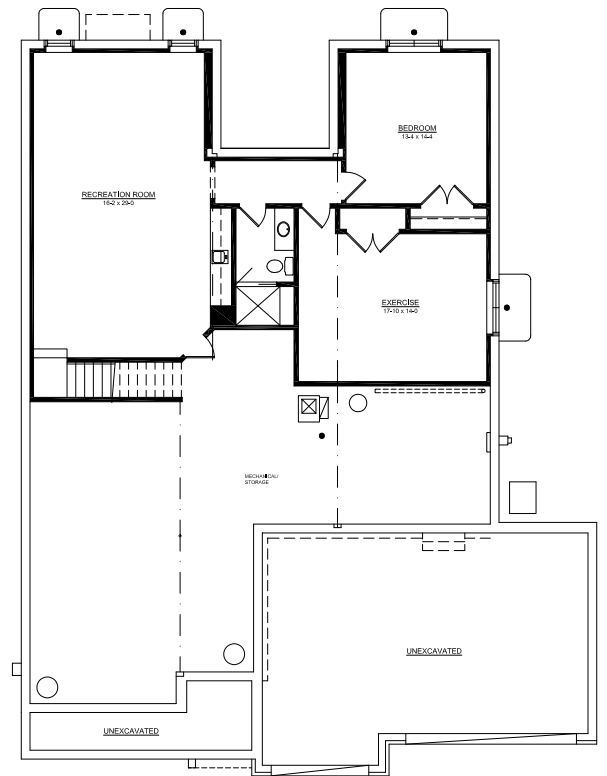
ELEVATION B ↑

The Brunswick
2 Bedrooms & 2-1/2 Bathrooms: 2,250 sq. ft.



2,250 sq. ft.

FIRST FLOOR PLAN



800 sq. ft.

OPTION LOWER LEVEL FLOOR PLAN



Bluff Pointe

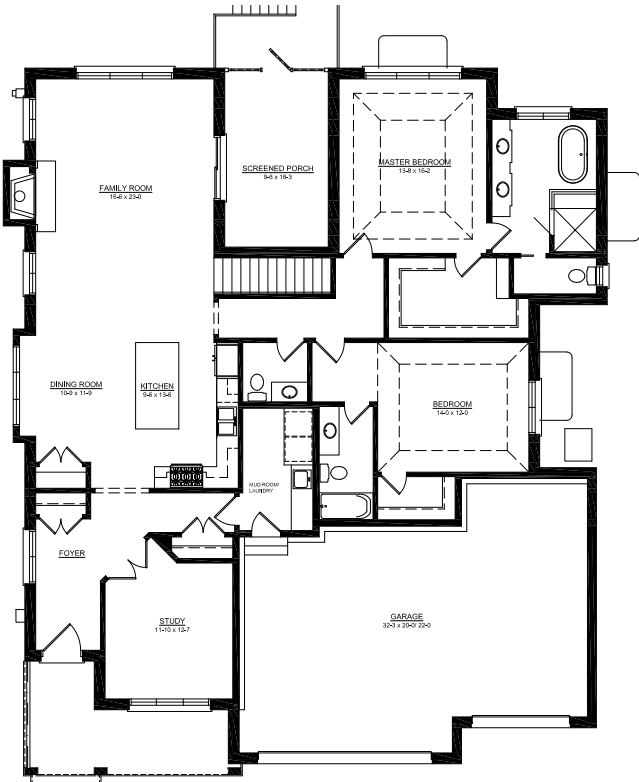


ELEVATION A ↑



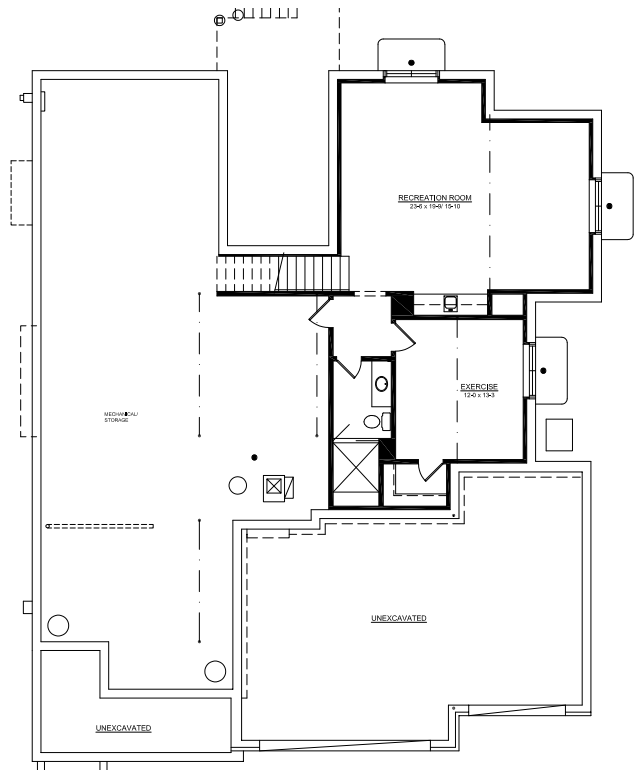
ELEVATION B ↑

The Essex
2 Bedrooms & 2-1/2 Bathrooms: 2,375 sq. ft.



2,375 sq. ft.

FIRST FLOOR PLAN



1,200 sq. ft.

OPTION LOWER LEVEL FLOOR PLAN