

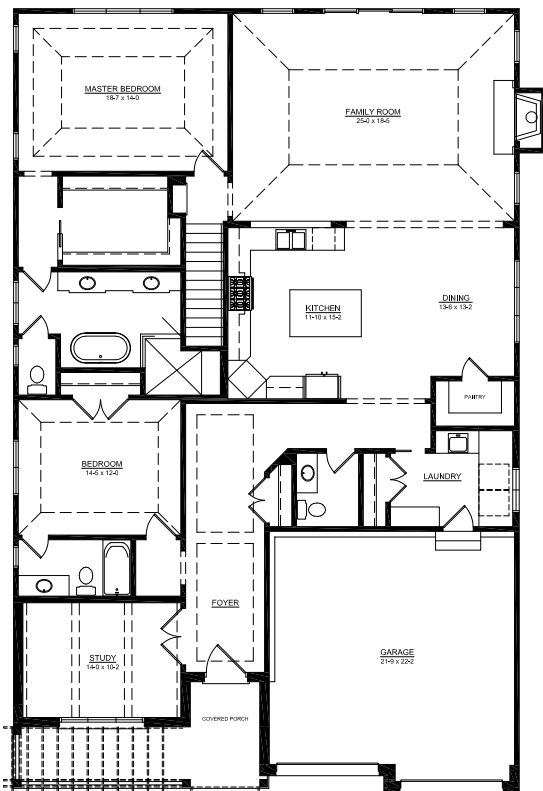


ELEVATION A ↑



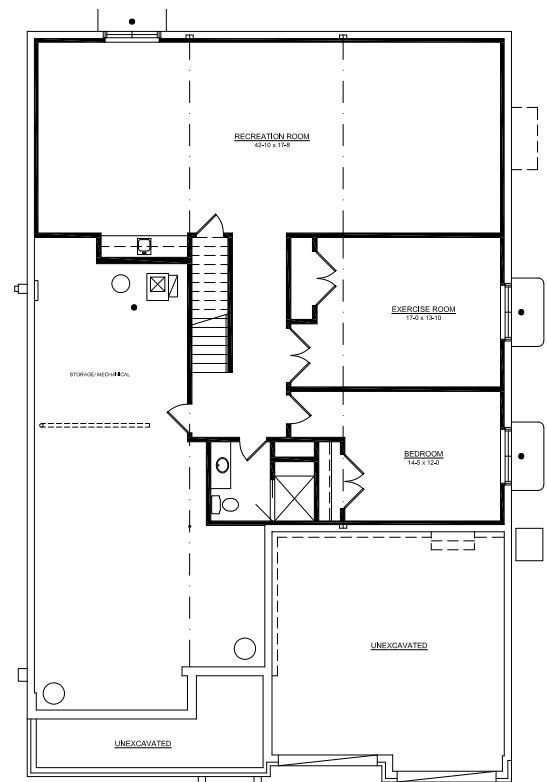
ELEVATION B ↑

The Ashford
2 Bedrooms & 2-1/2 Bathrooms: 2,450 sq. ft.



2,450 sq. ft.

FIRST FLOOR PLAN



1,600 sq. ft.

OPTION LOWER LEVEL FLOOR PLAN

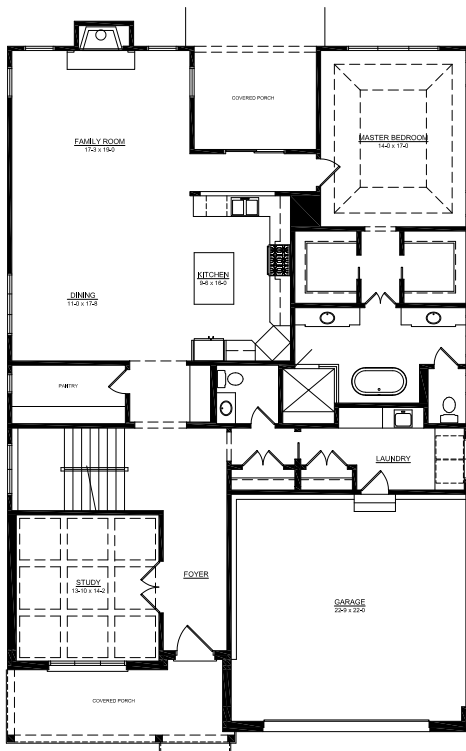


ELEVATION A ↑

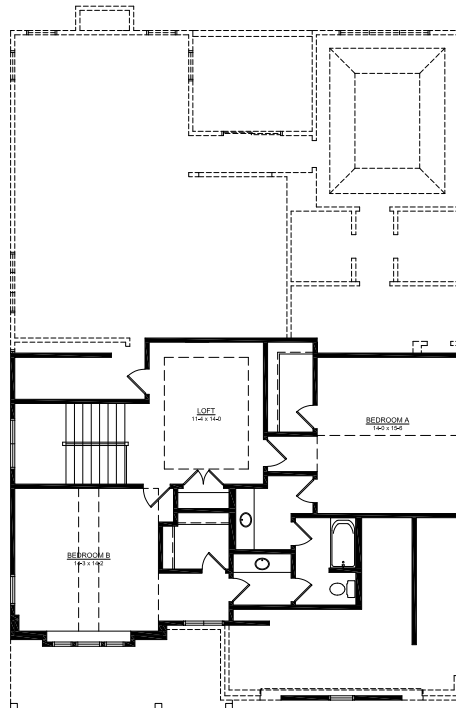


ELEVATION B ↑

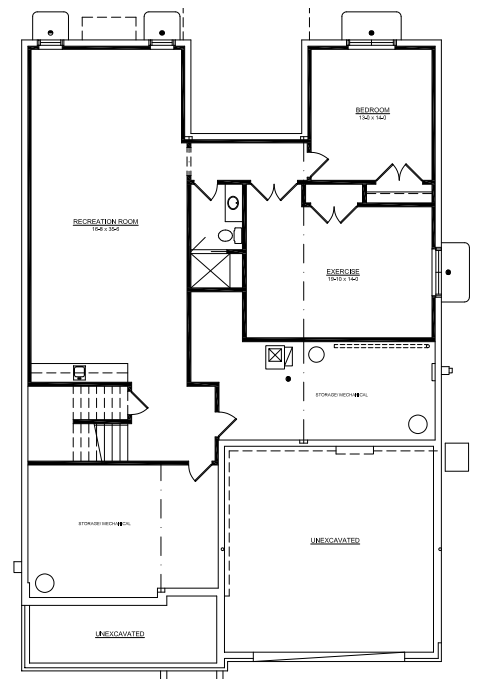
The Astoria
3 Bedrooms & 2-1/2 Bathrooms: 3,200 sq. ft.



FIRST FLOOR PLAN



SECOND FLOOR PLAN



OPTION LOWER LEVEL
FLOOR PLAN

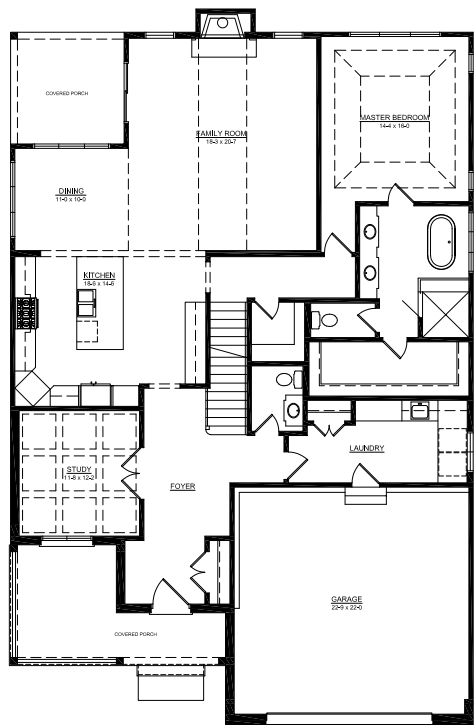


ELEVATION A ↑



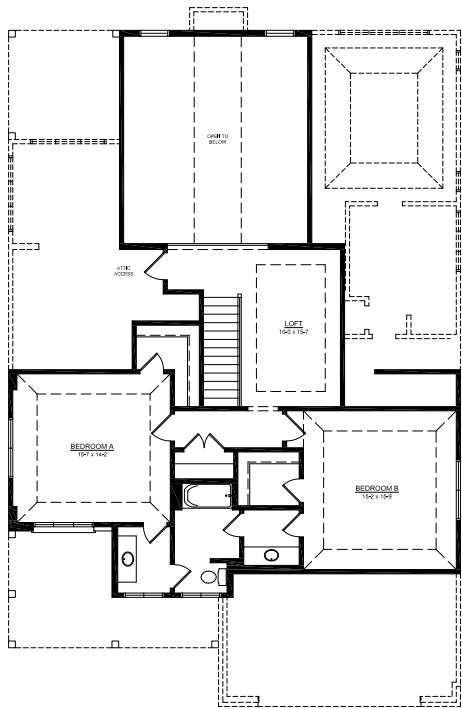
ELEVATION B ↑

The Bostonian
3 Bedrooms & 2-1/2 Bathrooms: 3,100 sq. ft.

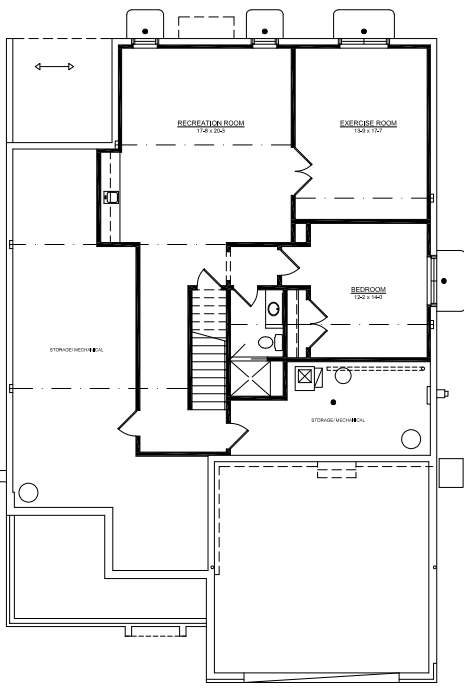


3,100 sq. ft.

FIRST FLOOR PLAN



SECOND FLOOR PLAN



1,200 sq. ft.

OPTION LOWER LEVEL
FLOOR PLAN

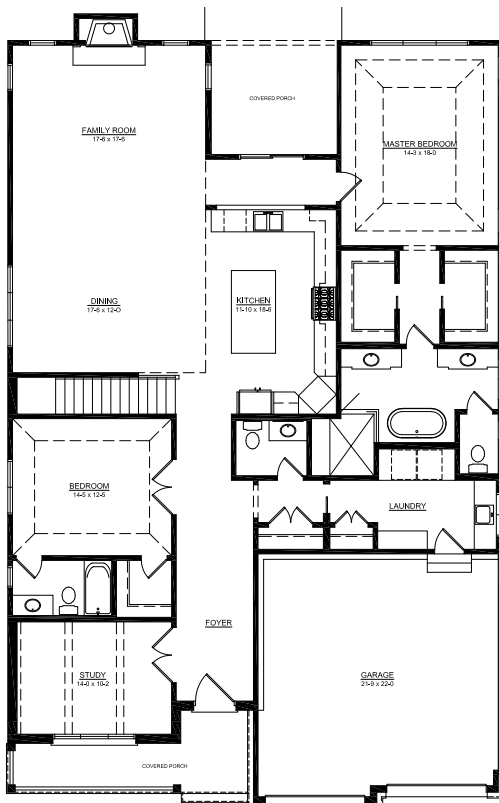


ELEVATION A ↑



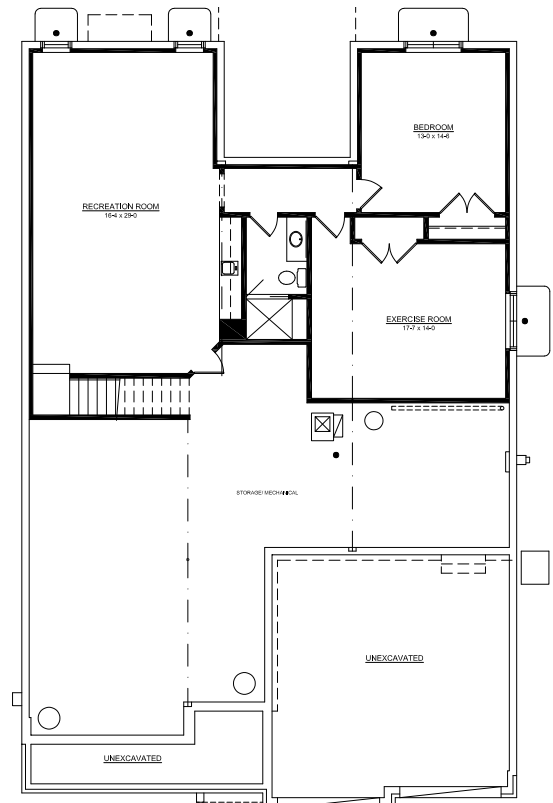
ELEVATION B ↑

The Brunswick
2 Bedrooms & 2-1/2 Bathrooms: 2,350 sq. ft.



2,350 sq. ft.

FIRST FLOOR PLAN



1,200 sq. ft.

OPTION LOWER LEVEL FLOOR PLAN

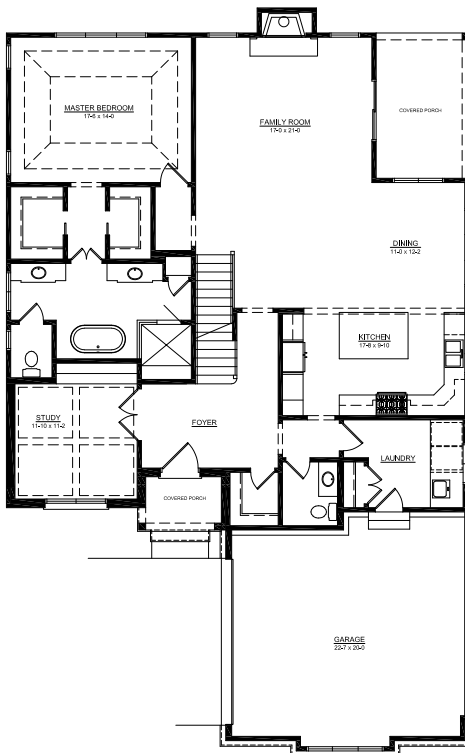


ELEVATION A ↑



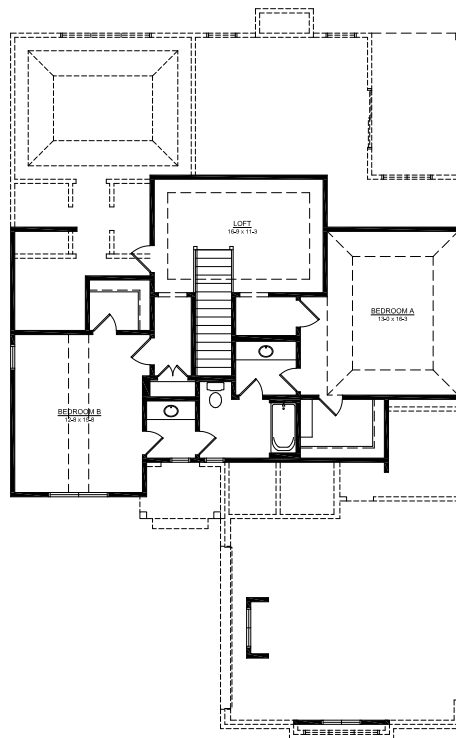
ELEVATION B ↑

The Carlisle II
3 Bedrooms & 2-1/2 Bathrooms: 3,000 sq. ft.

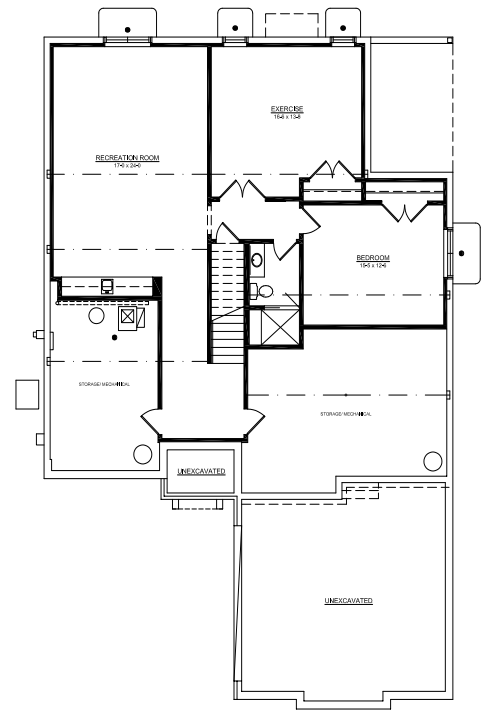


3,000 sq. ft.

FIRST FLOOR PLAN



SECOND FLOOR PLAN



1,250 sq. ft.

OPTION LOWER LEVEL
FLOOR PLAN



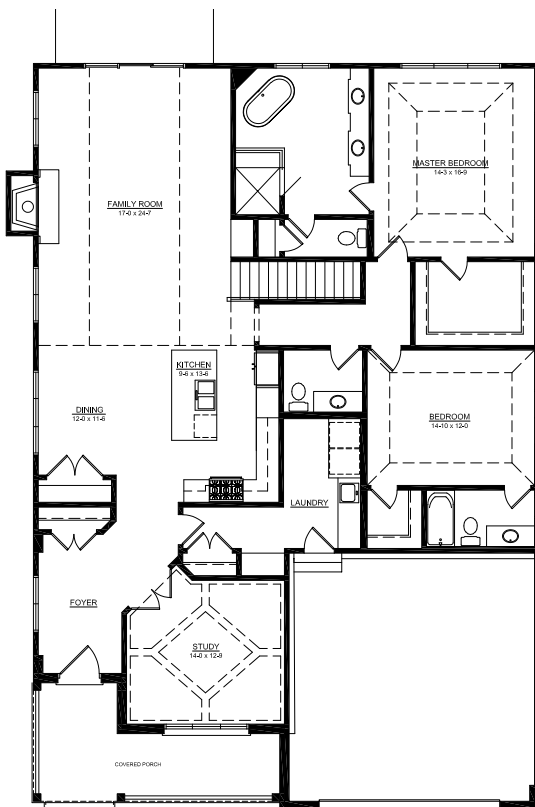
ELEVATION A ↑



ELEVATION B ↑

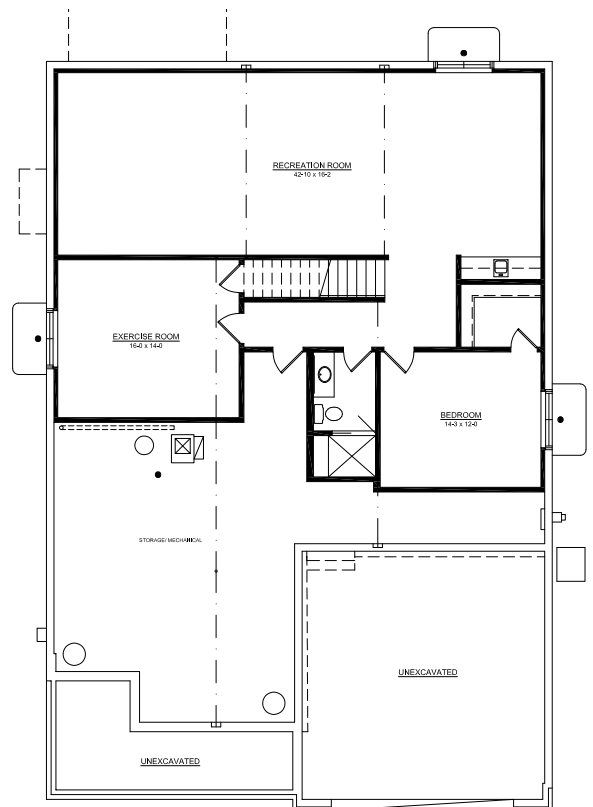
The Essex

2 Bedrooms & 2-1/2 Bathrooms: 2,300 sq. ft.



2,300 sq. ft.

FIRST FLOOR PLAN



1,450 sq. ft.

OPTION LOWER LEVEL FLOOR PLAN

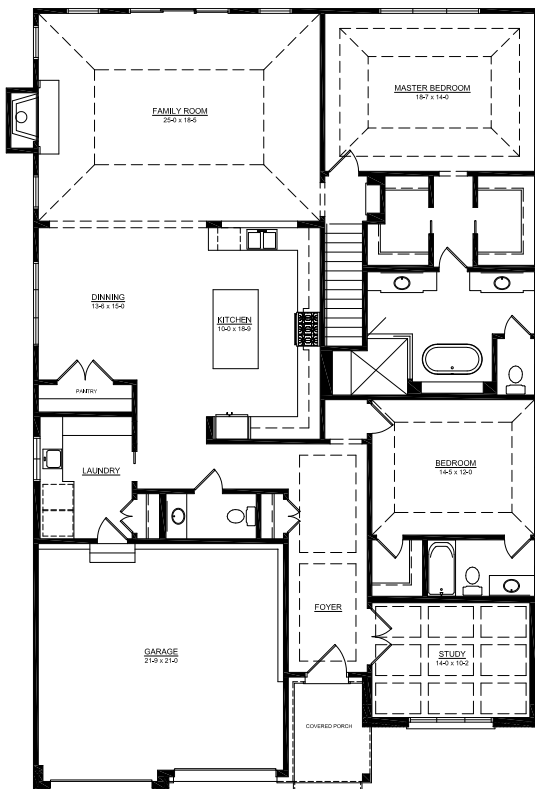


ELEVATION A ↑



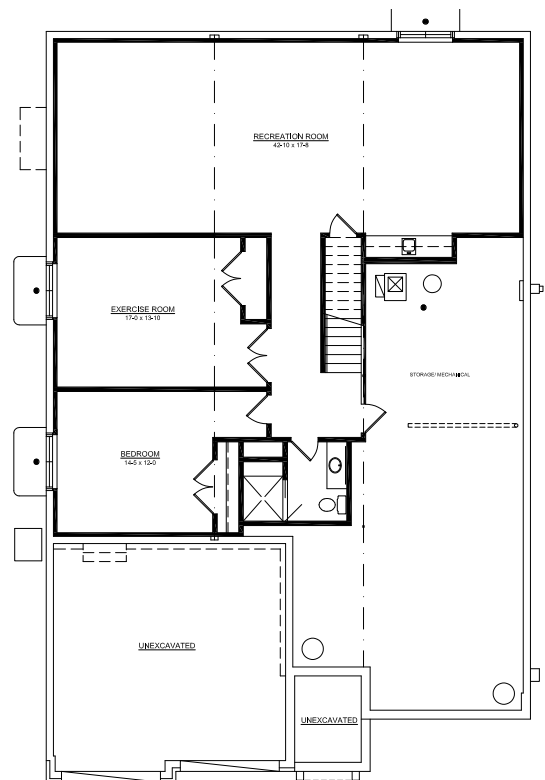
ELEVATION B ↑

The Fenwick
2 Bedrooms & 2-1/2 Bathrooms: 2,475 sq. ft.



2,475 sq. ft.

FIRST FLOOR PLAN



1,600 sq. ft.

OPTION LOWER LEVEL FLOOR PLAN